

PC SERIES

PC系列

应用领域: 冶金矿山

PC

传动装置专业制造商
PROFESSIONAL MANUFACTURER OF TRANSMISSION DEVICE

产品概述 / PRODUCTS OVERVIEW

前置斜齿轮减速机 (PC) /PRESTAGE HELICAL GEARED UNITS(PC)

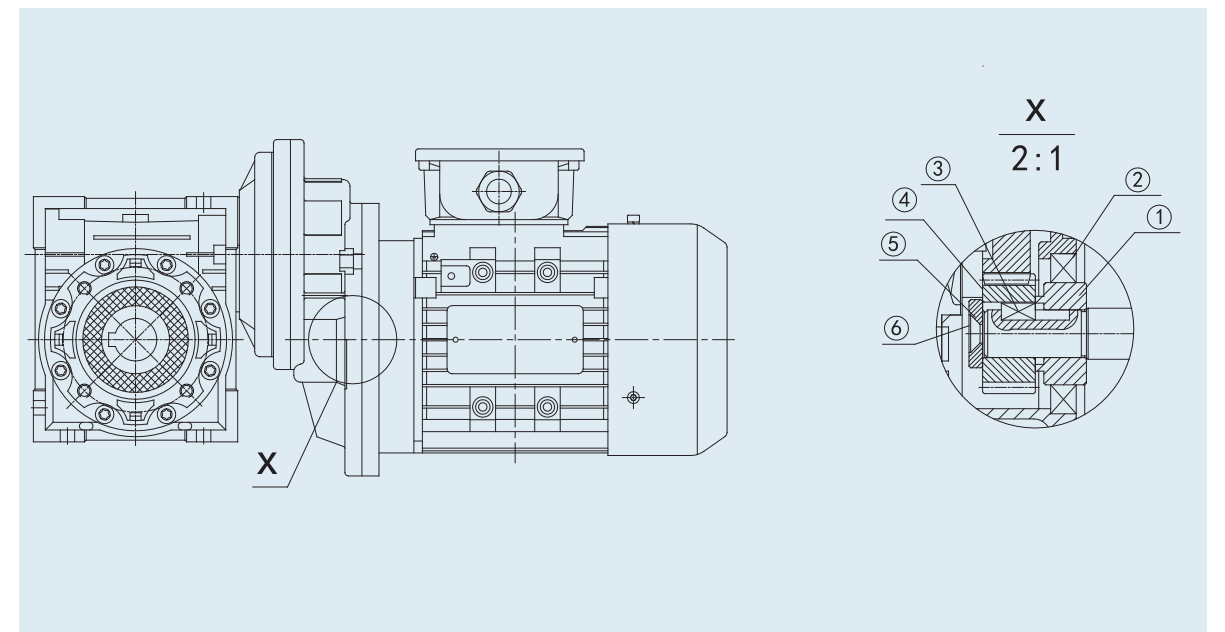
PC前置斜齿轮减速机是一种模块形式结构的产品，它可以与任何一种带有PAM输入法兰孔输入的减速机组合，各种不同的法兰和输出轴可以参照第21页。前置减速装置与马达组合以B14方式输出。该装置不能单独使用，只能与减速机配套使用。

The PC construction is modular and therefore it can be as a separate unit mounted on any type of fitted geared motor(PAM), whose the various possibilities of flange/output shafts can be found on page 21. Fitting the pre-stage helical module on the main reduction unit is easily done as for any motor of type B14. The prestage unit cannot be used by itself, but only coupled with another reducer unit.

材料 MATERIALS

铝合金外壳；齿轮：40Cr，基于渐开线精密制造。

Case in aluminium alloy. Gears:40Cr, machined accurately base on the accurate.



产品概述 / PRODUCTS OVERVIEW

与电机连接COUPLING TO ELECTRIC MOTOR

当PC小齿轮安装在电机轴上时，需要注意下列几点：

- a. 彻底清洁好马达驱动轴；
- b. 取出马达驱动轴上的平键；
- c. 按下图所示，把轴套1套在驱动轴上，为了更容易安装，可以把轴套加热至大约70 - 80℃；
- d. 再把新的平键3装在驱动轴键槽上；
- e. 参照c的方法，把小齿轮4套在驱动轴上；
- f. 放上垫片5拧紧螺栓6；
- g. 拿走油封上的橡皮盖，这一步骤需要小心因为PC已经加注了润滑油；
- h. 装上油封2和其余的马达部件，小心不要弄坏油封；

注意：要达到低噪音和小振动的运行效果，建议选用质量较好的马达。

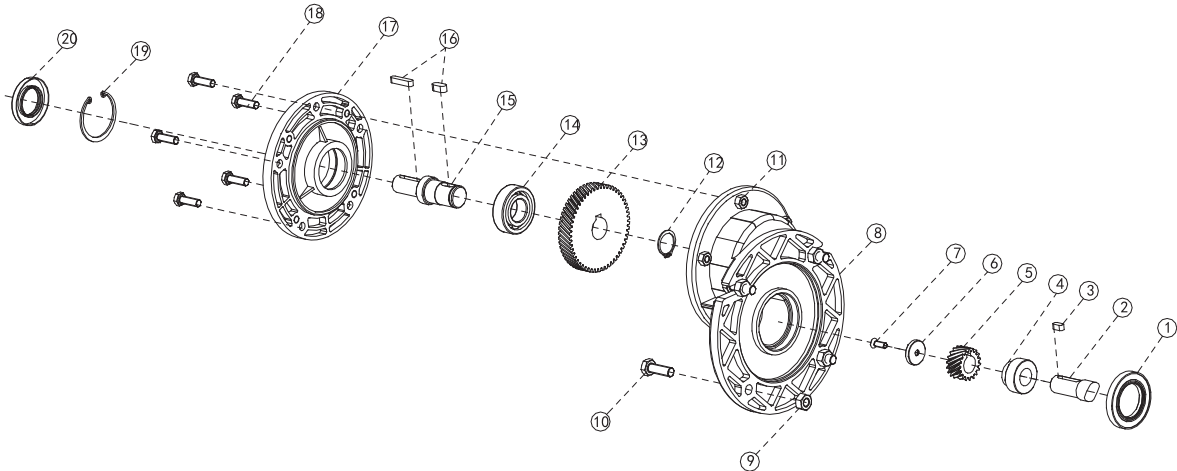
COUPLING TO ELECTRIC MOTOR

correctly fitting the pinion on the electric motor shaft requires you keep to the following instructions ;

- a. Thoroughly clean the electric motor shaft;
- b. Remove the motor key from its seat;
- c. Fit the bush 1 to the drive shaft as shown in the diagram to make this easier, you can heat the bush to approximately 70/80℃ ;
- d. Fit the new key3 provided in place of the one removed beforehand;
- e. Fit the pinion 4 taking the same precautions as described in point c;
- f. Fit the washer 5 and tighten with the screw6;
- g. Remove the rubber cap mounted on the seat of the oil seal, taking care since the prestage unit is already complete with lubricant;
- h. Fit the oil seal 2 and then the motor assembly, taking care not to damage the lip of the oil seal.

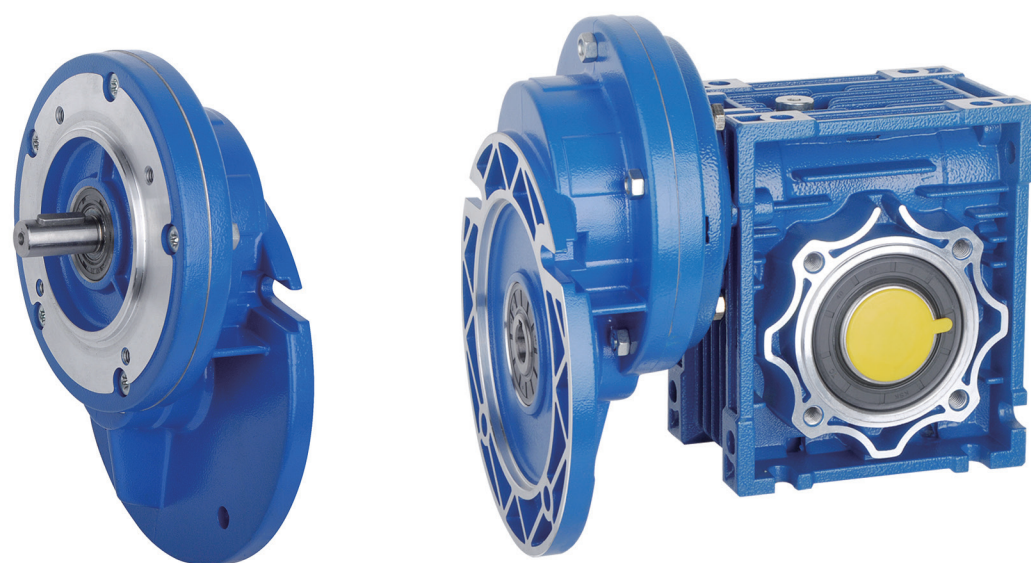
N.B. For correct operation, with no vibration or noise, it is recommended to use good quality motors

PC结构分解图 / PC STRUCTURE DIAGRAM

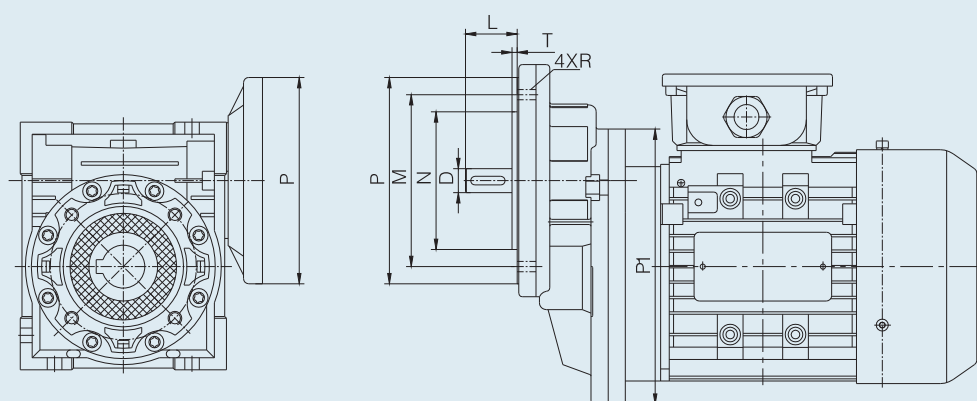


1	油封 (Oilseal)	6	垫片 (Shim)	11	六角螺母 (Hexagon nuts)	16	平键 (Parallelkey)
2	电机轴 (Shaft PAM)	7	螺栓 (Bolt)	12	轴用弹性挡圈 (Circlip for shaft)	17	输出端盖 (Output cover)
3	平键 (Parallelkey)	8	前置齿轮箱体 (Pre-stage unit case)	13	大齿轮 (Gear)	18	螺栓 (Bolt)
4	轴套 (Shaft liner)	9	六角螺母 (Hexagon nuts)	14	轴承 (Bearing)	19	孔用弹性挡圈 (Circlip for hole)
5	小齿轮 (Small pinion)	10	螺栓 (Bolt)	15	输出轴 (Low speed shaft)	20	油封 (Oilseal)

产品介绍 / PRODUCT INTRODUCTION



PC接口尺寸 / PC CONNECTION SIZE



TYPE	D(k6)	N(j6)	M	i	P	P1	R	T	L
PC063	11(14)	70	85	2.93	105	140(63B5)	M6	3	23
PC071	14(19)	80	100	2.94	120	160(71B5)	M6		30
PC080	19(24\28)	110	130	3	160	200(80B5)	M8		40
PC090	24(19\28)	110	130	2.45	160	200(90B5)	M8		50

> COMBINATION SERIES

组合系列

应用领域: 自动化生产领域

